

Spider SMS™ LP

Low power telemetry, logging and alarm system

Halytech **Spider SMS LP** is an intelligent, STAND-ALONE system capable of monitoring inputs, controlling outputs, alarm dialing and logging. The Spider can communicate by SMS text messages, e-mail, voice, internet and more....

The unit is housed in a rugged stainless steel enclosure and features extremely low power consumption, making it ideal for remote, battery operated applications.

Every **Spider SMS LP** has a built-in web server. It allows communication with most modern computers regardless of brand or operating system, without the need to install any software. Its unique design offers unprecedented ease of use as well as complete user programmability of all operating parameters.

Features

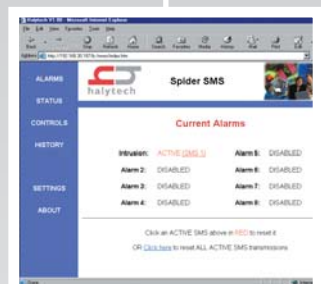
- Complete system includes:
 - Weatherproof, stainless steel enclosure
 - Rechargeable battery with built-in solar panel / mains charger support
 - Digital and analogue input interface
 - Relay outputs with 7 day / 24 hour programmable timer
 - SMS / email notification of alarms
 - Remote control by SMS
 - E-mail sending via LAN, dial-up internet or GPRS
 - High capacity solid state data logger
 - NextG or GSM cellular phone module
 - Optional Iridium satellite communications
 - Optional standard telephone line communication
- Extremely low power consumption
- Requires no system integration or custom software
- User configurable inputs, outputs and alarms
- User friendly "Internet surfing" approach
- Local Area Network (LAN) and remote modem access
- Simple installation and setup
- Field upgradeable software
- Designed and manufactured in Australia

Typical Applications

- Environmental Monitoring
- Access Control
- Air Conditioning
- Process Control
- Traffic Monitoring
- Water Treatment
- Irrigation
- Floodlight Control



Single Box Solution



Simple Access With Any Browser



Remote Deployment
NextG, GSM or Satellite comms

Specifications

General

Dimensions (approx)	200 x 200 x 125 mm
Weight (approx)	6 kg
Enclosure rating	IP - 66
Enclosure material	316 Stainless steel
Mounting system	Integrated into enclosure
Operating temperature	-5 to +50 degrees Celsius
Factory backup	12 months parts and labour guarantee

Power Supply

Operating voltage	12 V DC
Power source	Internal 12V 7.2Ah battery
Power consumption	approx. 10 mA in standard LP mode less than 1 mA in XLP mode
Charger type	built in battery management system supporting external solar panels and mains chargers

Inputs

Total number of inputs	8 user inputs + 3 system inputs
User Input type	Digital, analogue, counter or event individually definable by the user
Connector	Modular, plug-in terminal block
Wire size	Up to 1.5 mm ²
Input names	User definable

Digital Inputs

Type	Voltage free switch contact
-------------	-----------------------------

Analogue Inputs

Resolution	12 bits
Calibration	2 - point, full user control
Units of measure	User definable
Supported types	4 - 20 mA, common ground 0 - 2.5V, common ground 0 - 5V, common ground 0 - 10V, common ground

Counter / Event Inputs

Maximum frequency	10 pulses / second
Range	0 - 99,999

System Inputs

Type	Battery voltage Battery charger status System temperature
-------------	---

Outputs

Number of outputs	8
Type	Normally open relay contacts
Contact rating	1A 30V DC resistive
Connector	Modular, plug-in terminal block
Wire size	Up to 1.5 mm ²
Output Names	User definable
Output Control	Via browser and/or SMS and/or timer and/or alarms

Alarms

Number of alarms	8
Type	SMS and/or e-mail transmission
Trigger	User definable input and trigger point
SMS / e-mail text	1 per alarm, user definable
# of phone numbers	3 per alarm, user definable
# of e-mail addresses	2 per alarm, user definable
Alarm names	User definable

Logger

Capacity	25,000 records
Storage memory	Battery-backed SRAM
Time resolution	1 second
Download format	CSV file

Local Display and Keypad

Display	16 character x 2 line alphanumeric LCD with backlight
Keypad	Integrated, single key
Capability	Show inputs, outputs, alarms, LAN parameters (no external computer required)

Communication Interfaces

Ethernet	10 base-T, RJ-45 connector
Cellular phone module	Built-in NextG or GSM (as required) External antenna
E-mail sending method	User selectable: LAN, dial-up internet or GPRS (if available)
Satellite interface	Built in support for optional external Iridium satellite modem
Standard telephone line	Built in support for optional external PSTN modem
Synthesised speech	Software based with text to speech technology
Auxiliary Input¹	RS-232 or RS-485

Notes:

¹ Auxiliary Input is reserved for special applications (SDI-12, wireless sensors) and for future enhancements.
All specifications are subject to change without notice.

Optional Accessories



Solar Charger



Mains Charger



Spare Battery