

Spider SMS™ LC

Compact low power telemetry, logging and alarm system

Halytech **Spider SMS LC** is an intelligent, STAND-ALONE system capable of monitoring inputs, controlling outputs, alarm dialing and logging. The Spider can communicate by SMS text messages, e-mail, voice, internet and more....

It offers the same high performance and low power consumption as the Spider SMS LP, in a more economical plastic enclosure. It is ideal for system integrators and OEM applications.

Every **Spider SMS LC** has a built-in web server. It allows communication with most modern computers regardless of brand or operating system, without the need to install any software. Its unique design offers unprecedented ease of use as well as complete user programmability of all operating parameters.

Features

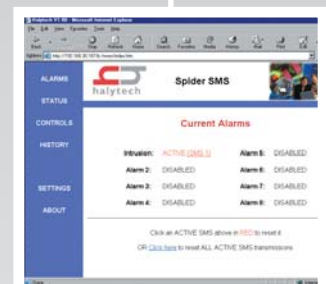
- Complete system includes:
 - Compact, lightweight plastic enclosure
 - Digital and analogue input interface
 - Relay outputs with 7 day / 24 hour programmable timer
 - SMS / email notification of alarms
 - Remote control by SMS
 - E-mail sending via LAN, dial-up internet or GPRS
 - High capacity solid state data logger
 - NextG or GSM cellular phone module
 - Built-in solar panel / mains charger support for external battery
 - Optional Iridium satellite communications
 - Optional standard telephone line communications
- Extremely low power consumption
- Requires no system integration or custom software
- User configurable inputs, outputs and alarms
- User friendly "Internet surfing" approach
- Local Area Network (LAN) and remote modem access
- Simple installation and setup
- Field upgradeable software
- Designed and manufactured in Australia

Typical Applications

- Environmental Monitoring
- Access Control
- Air Conditioning
- Process Control
- Traffic Monitoring
- Water Treatment
- Irrigation
- Floodlight Control



Compact Size



Simple Access With Any Browser



Wireless Communications
NextG, GSM or Satellite

Specifications

General

Dimensions (approx)	110 (W) x 200 (H) x 85 (D) mm
Weight (approx)	800 g
Enclosure rating	IP - 50
Enclosure material	Polystyrene / acrylic
Mounting system	Integrated into enclosure
Operating temperature	-5 to +50 degrees Celsius
Factory backup	12 months parts and labour guarantee

Power Supply

Operating voltage	Nominal 12 V DC
Power consumption	approx. 10 mA in standard LP mode less than 1 mA in XLP mode
Charger type	Built in battery management system supporting an external battery and external solar panel and/or mains charger

Inputs

Total number of inputs	8 user inputs + 3 system inputs
User Input type	Digital, analogue, counter or event, individually definable by the user
Connector	Modular, plug-in terminal block
Wire size	Up to 1.5 mm ²
Input names	User definable

Digital Inputs

Type	Voltage free switch contact
-------------	-----------------------------

Analogue Inputs

Resolution	12 bits
Calibration	2 - point, full user control
Units of measure	User definable
Supported types	4 - 20 mA, common ground 0 - 2.5V, common ground 0 - 5V, common ground 0 - 10V, common ground

Counter / Event Inputs

Minimum pulse width	100 ms
Range	0 - 99,999

System Inputs

Type	External battery voltage Battery charger status System temperature
-------------	--

Outputs

Number of outputs	8
Type	Normally open relay contacts
Contact rating	1A 30V DC resistive
Connector	Modular, plug-in terminal block
Wire size	Up to 1.5 mm ²
Output Names	User definable
Output Control	Via browser and/or SMS and/or timer and/or alarms

Alarms

Number of alarms	8
Type	SMS and/or e-mail transmission
Trigger	User definable input and trigger point
SMS / e-mail text	1 per alarm, user definable
# of phone numbers	3 per alarm, user definable
# of e-mail addresses	2 per alarm, user definable
Alarm names	User definable

Logger

Capacity	25,000 records
Storage memory	Battery-backed SRAM
Time resolution	1 second
Download format	CSV file

Local Display and Keypad

Display	16 character x 2 line alphanumeric LCD with backlight
Keypad	Integrated, single key
Capability	Show inputs, outputs, alarms, LAN parameters (no external computer required)

Communication Interfaces

Ethernet	10 base-T, RJ-45 connector
Cellular phone module	Built-in NextG or GSM (as required) External antenna
E-mail sending method	User selectable: LAN, dial-up internet or GPRS (if available)
Satellite interface	Built in support for optional external Iridium satellite modem
Standard telephone line	Built in support for optional external PSTN modem
Synthesised speech	Software based with text to speech technology
Auxiliary Input¹	RS-232 or RS-485

Notes:

¹ Auxiliary Input is reserved for special applications (SDI-12, wireless sensors) and for future enhancements.
All specifications are subject to change without notice.

Optional Accessories



Solar Charger



Mains Charger



Rechargeable Battery